

---

# Welcome!

## Healthiest County 2015:

### La Crosse

---



---

# Let's start the summit!

---

Dr. Jeffrey Thompson –  
Gundersen Lutheran  
LMHSC Board President



---

# Overview and Plan for the Morning

---

Cindy Kartman –  
Western Technical College  
LMHSC Population Health Committee Chair



---

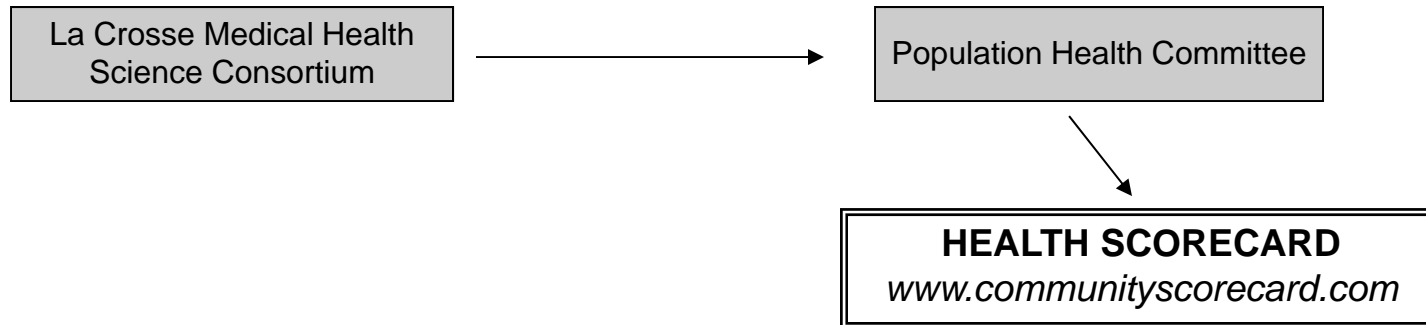
2006

Population  
Health  
Committee  
Formed

---

La Crosse Medical Health  
Science Consortium





# www.communityscorecard.com



The screenshot shows the homepage of the La Crosse Medical Health Science Consortium Health Scorecard Project. The page has a green header with the consortium's logo and name. Below the header is a navigation bar with links to Consortium Home, To Scorecard, Contact Us, and Help. The main content area features a welcome message, a map of the consortium's service area, and several paragraphs of text providing information about the project and its data sources.

**LA CROSSE MEDICAL HEALTH SCIENCE CONSORTIUM**  
*Health Scorecard Project*

[Consortium Home](#) [To Scorecard](#) [Contact Us](#) [Help](#)

**Welcome to the La Crosse Medical Health Science Consortium Health Scorecard Project**

Here you will find a variety of information on health concerns encompassing the 20 counties of the [La Crosse Medical Health Science Consortium](#).

If there is additional information that you are seeking within each health topic please select the links to the original data. There is a variety of data available at this website.

Please see the following links for our burden reports:

- The Burden of Obesity and Physical Inactivity: [Burden of Obesity Report](#)
- The Burden of Alcohol Related Injuries: [Alcohol Related Injury and Death](#)

The La Crosse Medical Health Science Consortium has gathered this data from existing public sources. Please cite the original source of the data if available. Should you find any data to be inaccurate, please use our [contact form](#) to let us know.

The La Crosse Medical Health Science Consortium's Telehealth Network Project funded the initial programming costs for this project, which is supported by grant number DIBTH00036 from the Office for the Advancement of Telehealth (OAT) in the Health Resources and Services Administration of the U.S. Dept. of Health and Human Services. The Great Rivers United Way provided funding through a Venture Grant for additional enhancements.

There have been 26,556 visits since the creation of this Health Scorecard Project.

---

2006

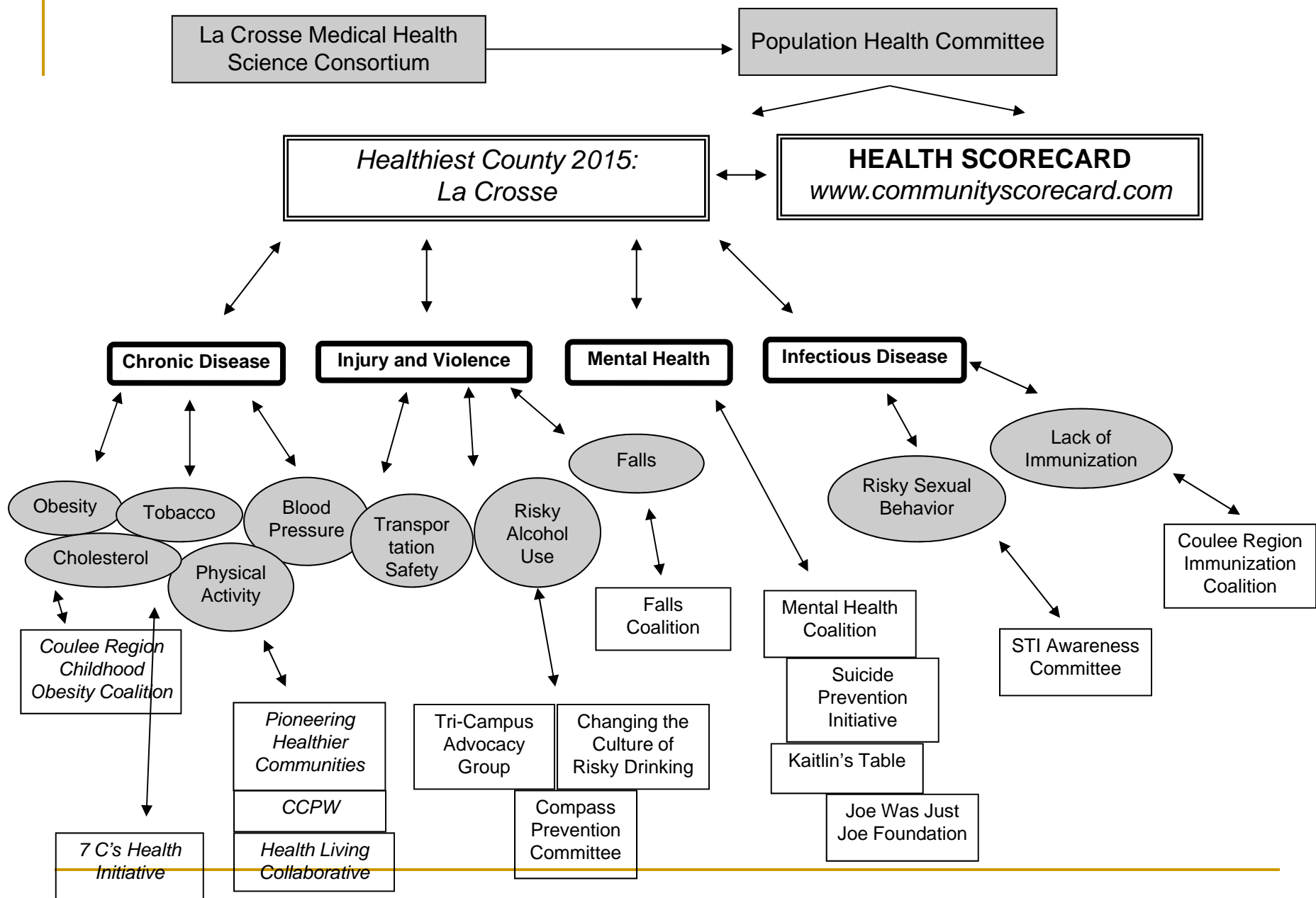
Population  
Health  
Committee  
Formed

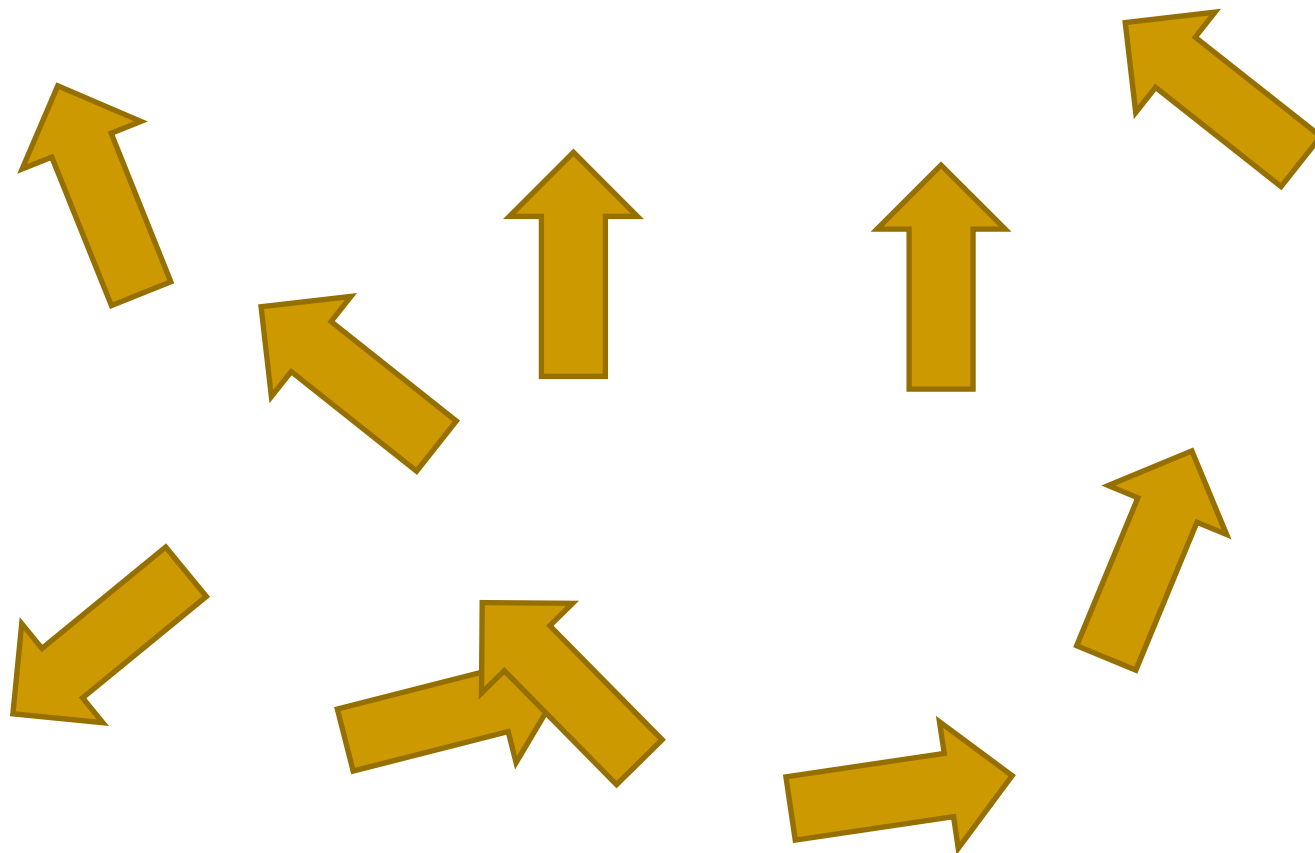
2007

Community  
Scorecard











[About the Project](#)
[Roadmaps](#)
[FAQs](#)
[News](#)
[For Media](#)
[Site Search](#)


**County Health Rankings**  
 Mobilizing Action Toward Community Health


**OUR APPROACH**


**RANKING METHODS**


**ACTION STEPS**


**YOUR STORIES**

Find Health Rankings:  
 Enter a County or State  [▶](#)



**OUR APPROACH**
[View Full Rankings Model](#)

**Programs and Policies**

- Our County Health Rankings model is grounded in the belief that programs and policies implemented at the local, state, and federal levels have an impact on the variety of factors that, in turn, determine the health outcomes for communities across the nation.

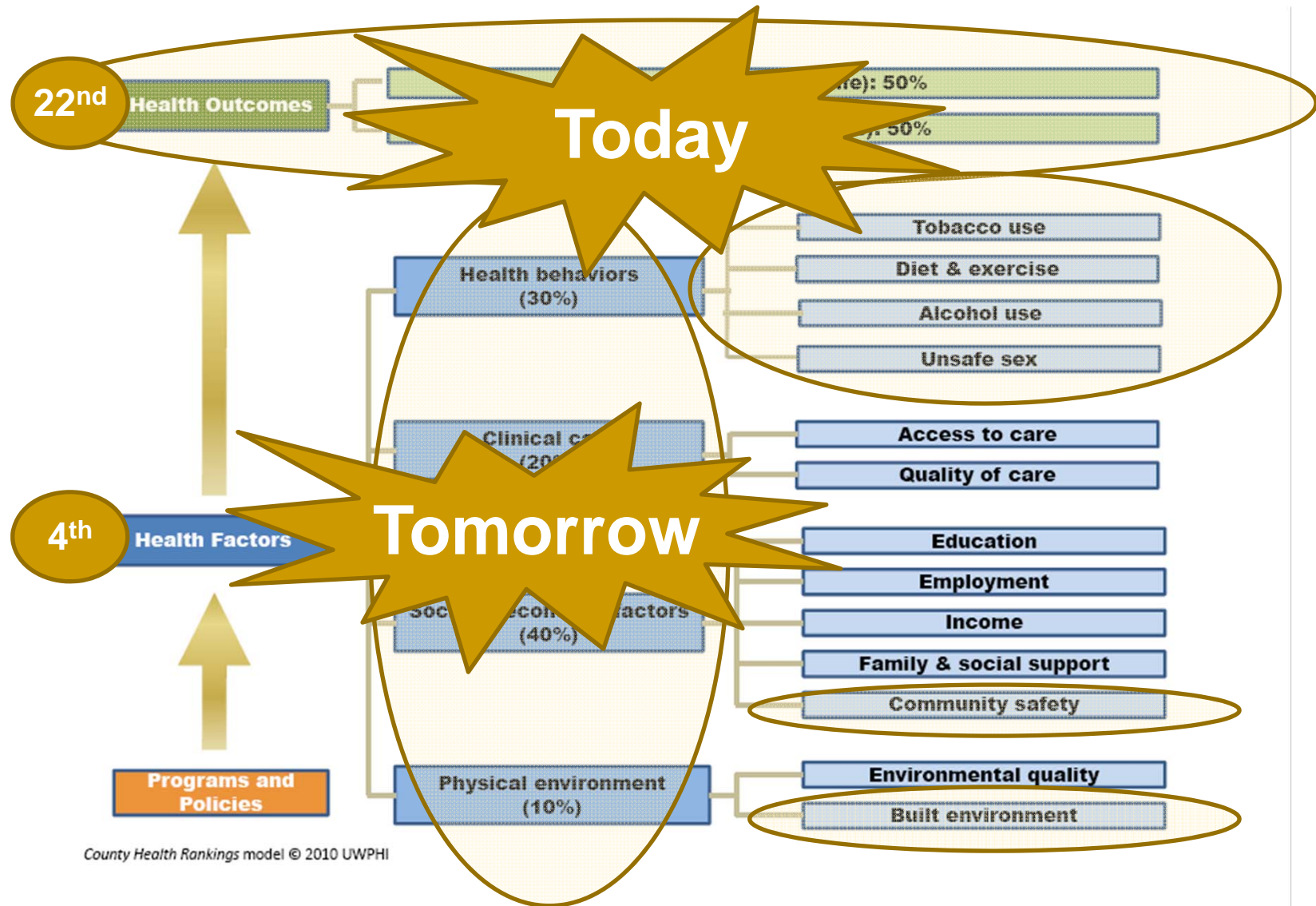
**Health Factors**

- A number of different health factors shape a community's health outcomes. Our County Health Rankings model includes four types of health factors: health behaviors, clinical care, social and economic, and the physical environment.

**Health Outcomes**

- We measure two types of health outcomes to represent how healthy each county is: how long people live (mortality) and how healthy people feel (morbidity). These outcomes are the result of a collection of health factors and are influenced by programs and policies at

[www.countyhealthrankings.org](http://www.countyhealthrankings.org)



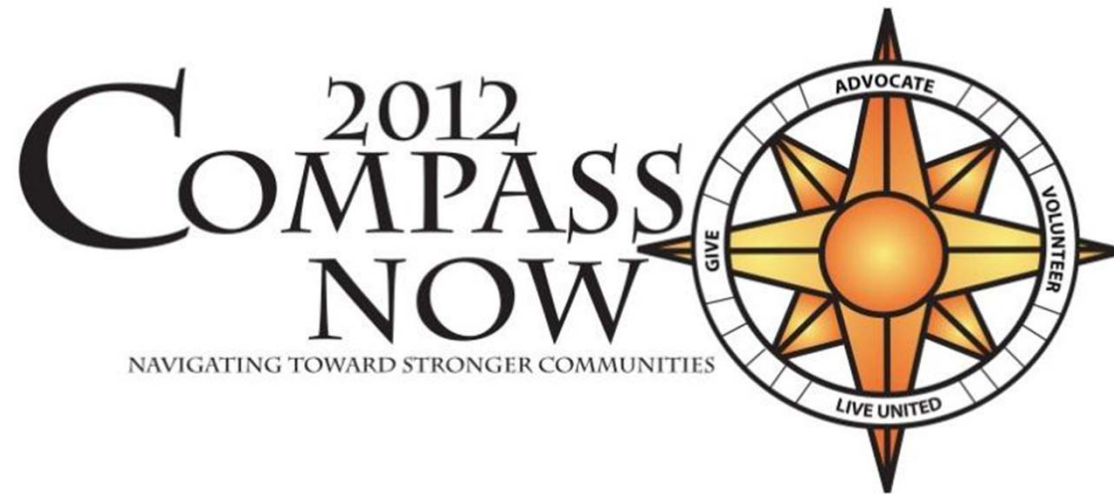
---

Healthy County Rankings  
Will Be Announced On  
**April 3, 2012**

---

[www.countyhealthrankings.org](http://www.countyhealthrankings.org)





---

Brenda Rooney -  
Gundersen Lutheran  
LMHSC Population Health Committee





---

# Partners

## Great Rivers United Way

### Hospital/Health Systems:

- Gundersen Lutheran Health System
- Mayo Clinic Health System
- St. Joseph's Health Services-Gundersen Lutheran
- Tomah Memorial Hospital
- Tri-County Memorial Hospital
- Vernon Memorial Healthcare

### Health Departments:

- La Crosse County
- Monroe County
- Trempealeau County
- Vernon County
- Houston County

La Crosse Community  
Foundation

---

---

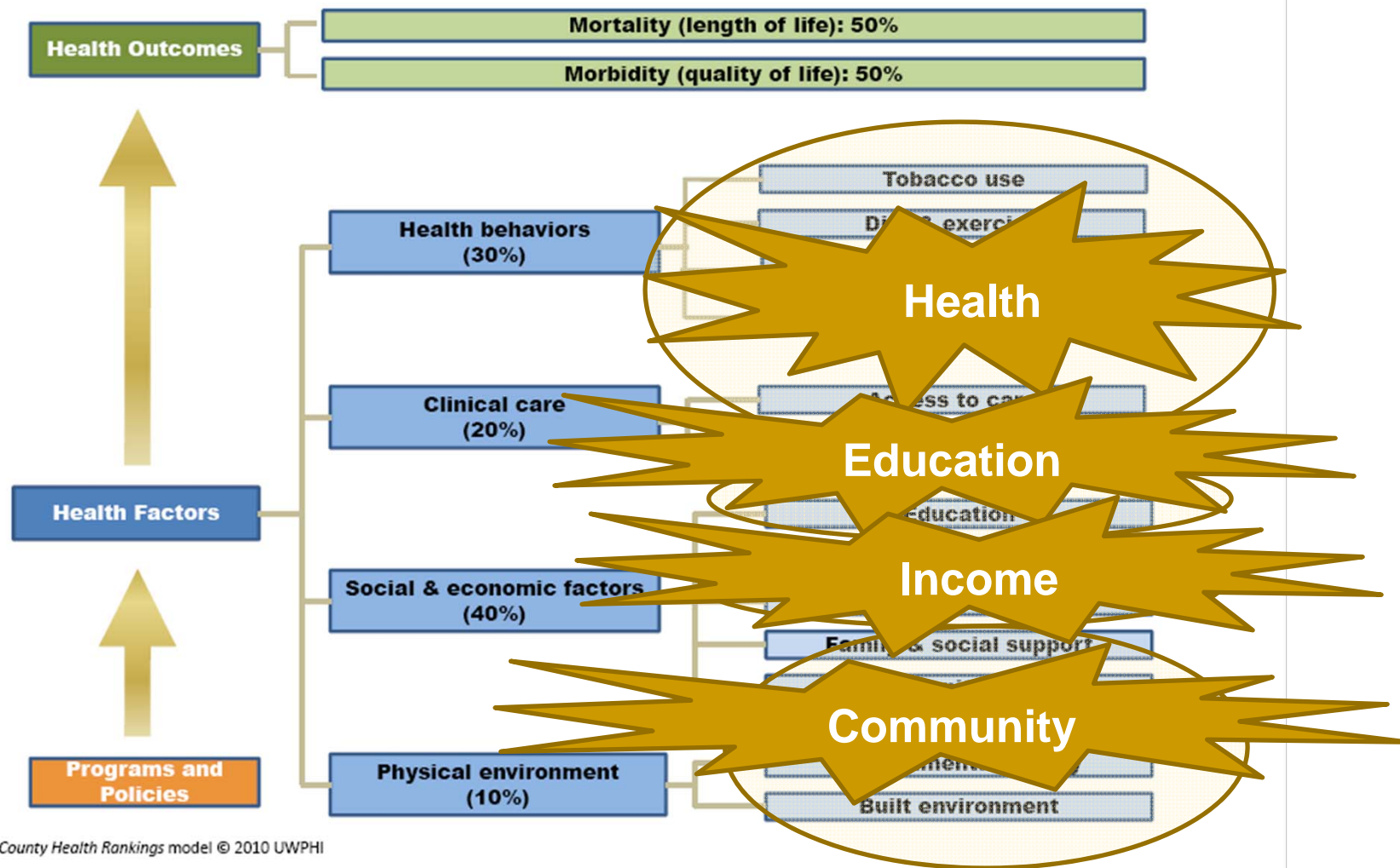
# Purpose:

- Assess the needs in our community
  - Identify community resources to address the most urgent needs
  - Encourage the development of action plans that solve community problems
-

---

# Methodology

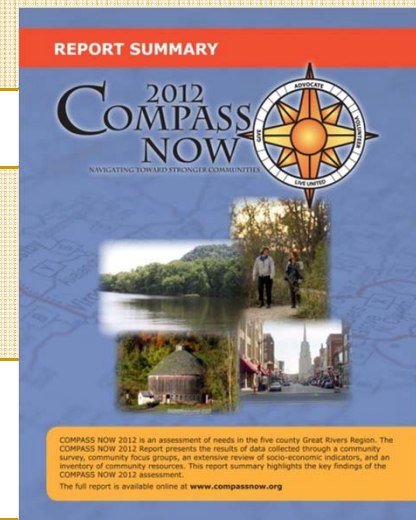
- Random Sample Household Survey
    - 90 item survey
    - 1106 completed
  - Focus Group Study
    - Key Informants and Community Members
    - 38 focus groups, 313 people
  - Socio-economic Indicator Data Analysis
  - Community Resources Inventory
-



# COMPASS NOW 2012 RESULTS:

HEALTH	INCOME
<ul style="list-style-type: none"><li>• Alcohol use</li><li>• Health care access and cost</li><li>• Mental health</li><li>• Obesity</li></ul>	<ul style="list-style-type: none"><li>• Limited economic development</li><li>• Low living wages</li><li>• Unemployment</li></ul>
EDUCATION	COMMUNITY
<ul style="list-style-type: none"><li>• School readiness</li><li>• Job skills training</li></ul>	<ul style="list-style-type: none"><li>• Transportation</li><li>• Food availability</li><li>• Childcare</li></ul>

[www.compassnow.org](http://www.compassnow.org)



---

2006

Population  
Health  
Committee  
Formed

2007

Community  
Scorecard

2009

1<sup>st</sup> Health  
Summit

2010

1<sup>st</sup> Draft of  
Healthiest  
County  
2015 Plan  
Revealed



LA CROSSE MEDICAL HEALTH SCIENCE  
**CONSORTIUM**

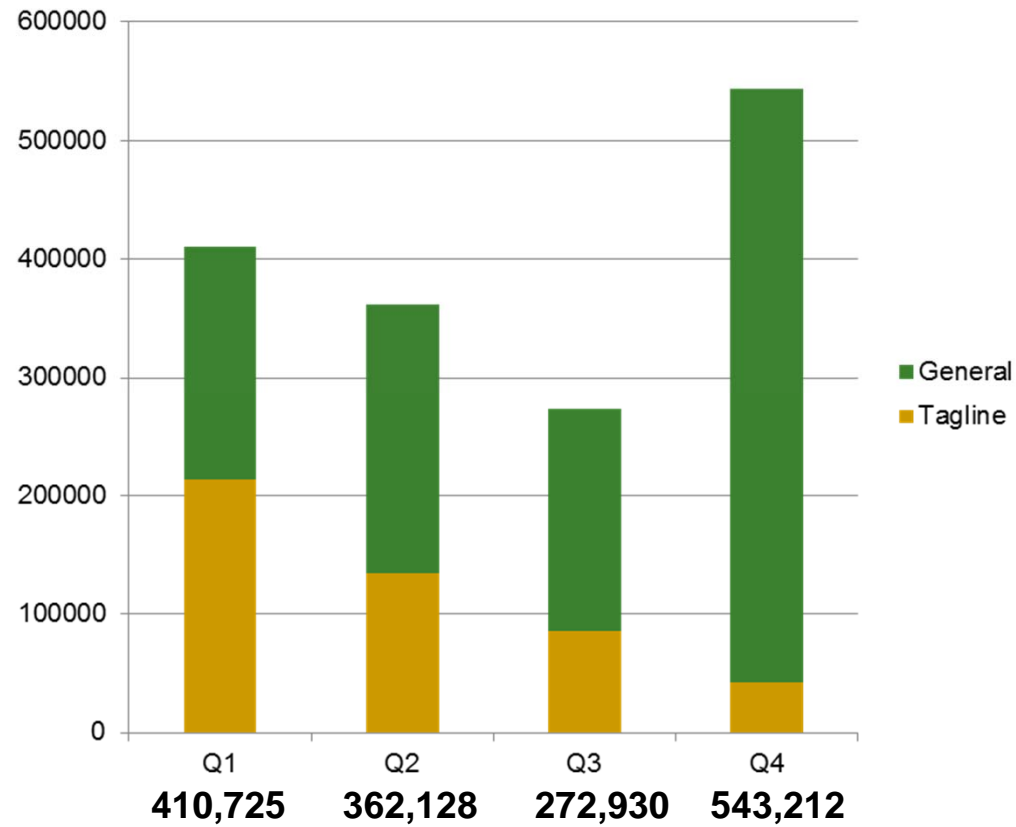
---

750,000 media impressions  
over the next year!

---

## Media Impressions by Quarter

Impression Total:  
**1, 588,995**





---

# Awakening the Power in Our Community!

---



---

# Wrap Up & Next Steps

---

---

# Action Tasks...

We are asking the following from you:

- Share our common goal
- Try to implement one thing you learned today
- Attend Joint PH Meeting
- Fill out Summit Evaluation

---

# Thank You!

---



---

# Contact information

- La Crosse Medical Health Science Consortium
  - <http://lacrosseconsortium.org>
  - Catherine Kolkmeier, Director, 785-5151
    - [kolkmeie.cath@uwlax.edu](mailto:kolkmeie.cath@uwlax.edu)
  - Joanne Sandvick, Project Specialist, 785-5150
    - [sandvick.joan@uwlax.edu](mailto:sandvick.joan@uwlax.edu)