
Welcome!

Healthiest County 2015: La Crosse

Special thanks to Java Detour for
the donation of today's coffee!



Welcome and Setting the Stage for the Morning

Dr. Jeffrey Thompson – Gundersen Lutheran,
LMHSC Board President

Betty Jorgenson – Franciscan Skemp, LMHSC
Population Health Committee Chair



County Health Rankings Model and How La Crosse Stacks Up

Brenda Rooney – Gundersen Lutheran
Doug Mormann – La Crosse County
Health Department



Where to begin??

Community Health Status Indicators CHSI

**Scorecard: Consortium Web site
offers health data for 20
counties including La Crosse
- La Crosse Tribune 6/4/2008**

New IOM Report Proposes 20 Indicator's of Americans' Health

**Ranking America's Mental Health: An Analysis
of Depression Across the States**

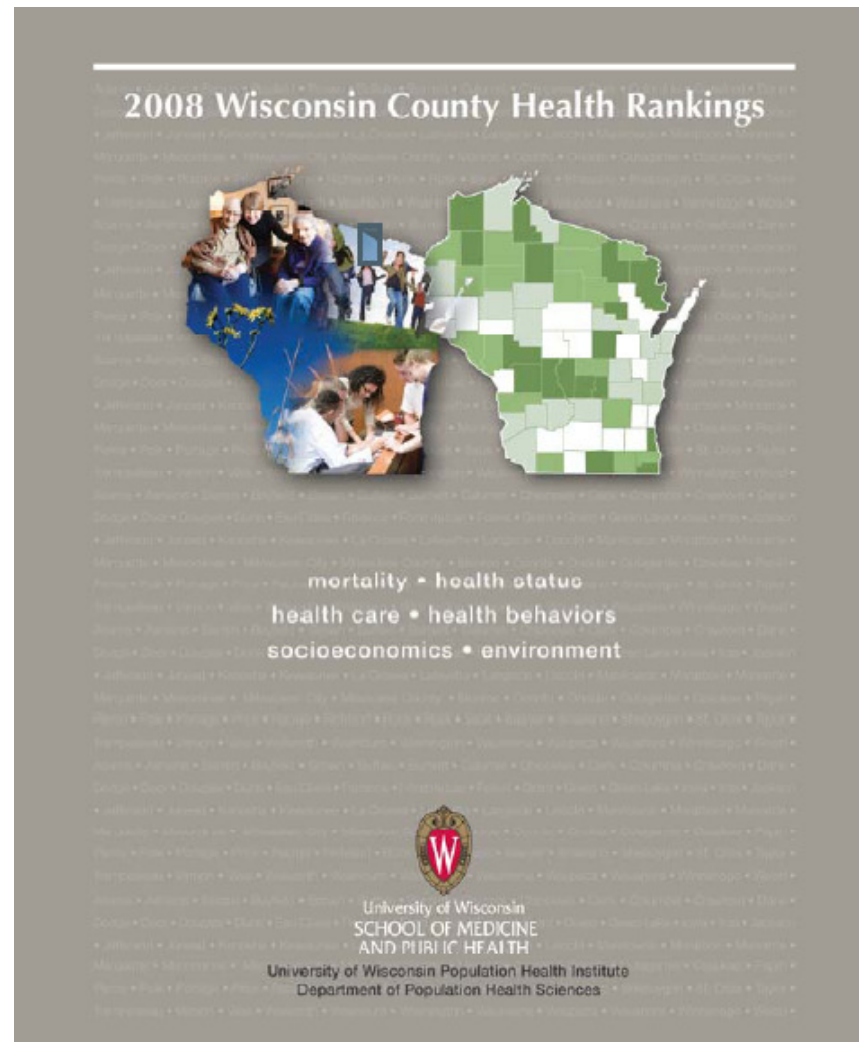
Ranking the States on Children's Health Care

The first-ever state-by-state health system "scorecard" to focus on children's health care finds wide differences across the country in the quality of care delivered, as well as disparities in access to services, insurance costs, and health outcomes, among other areas.

www.communityscorecard.com

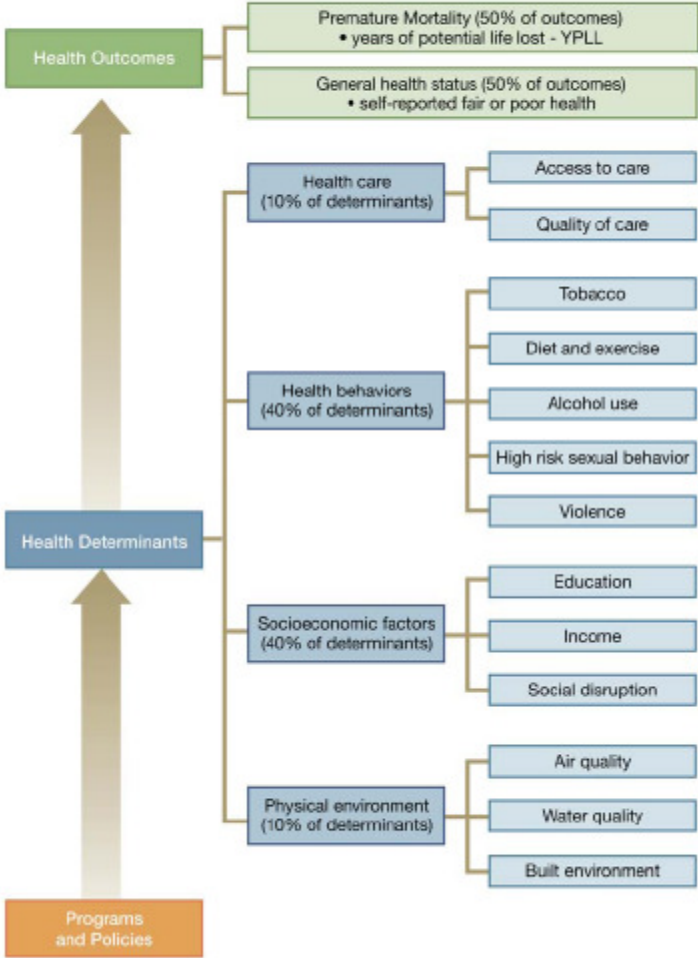


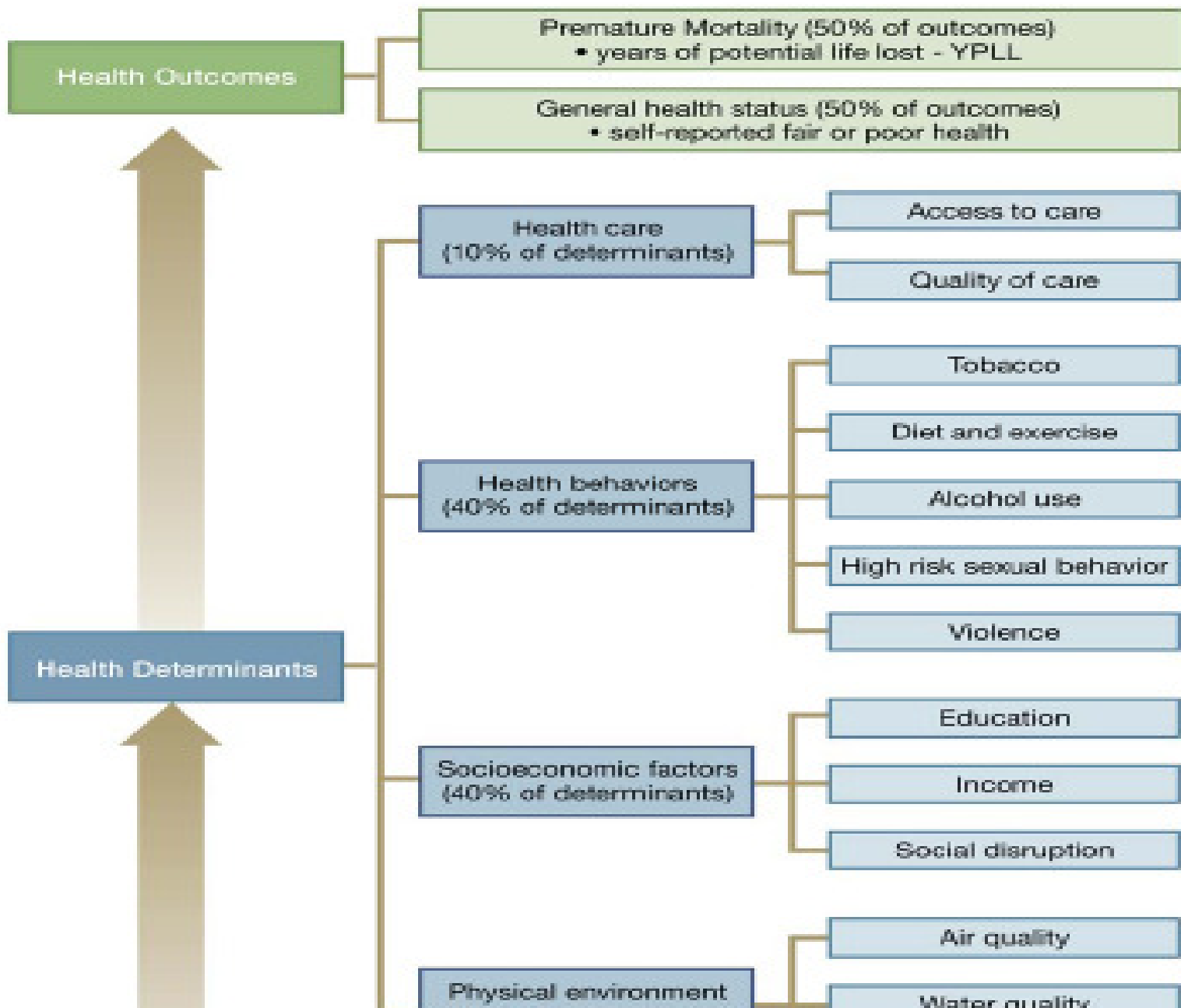
County Health Rankings Model

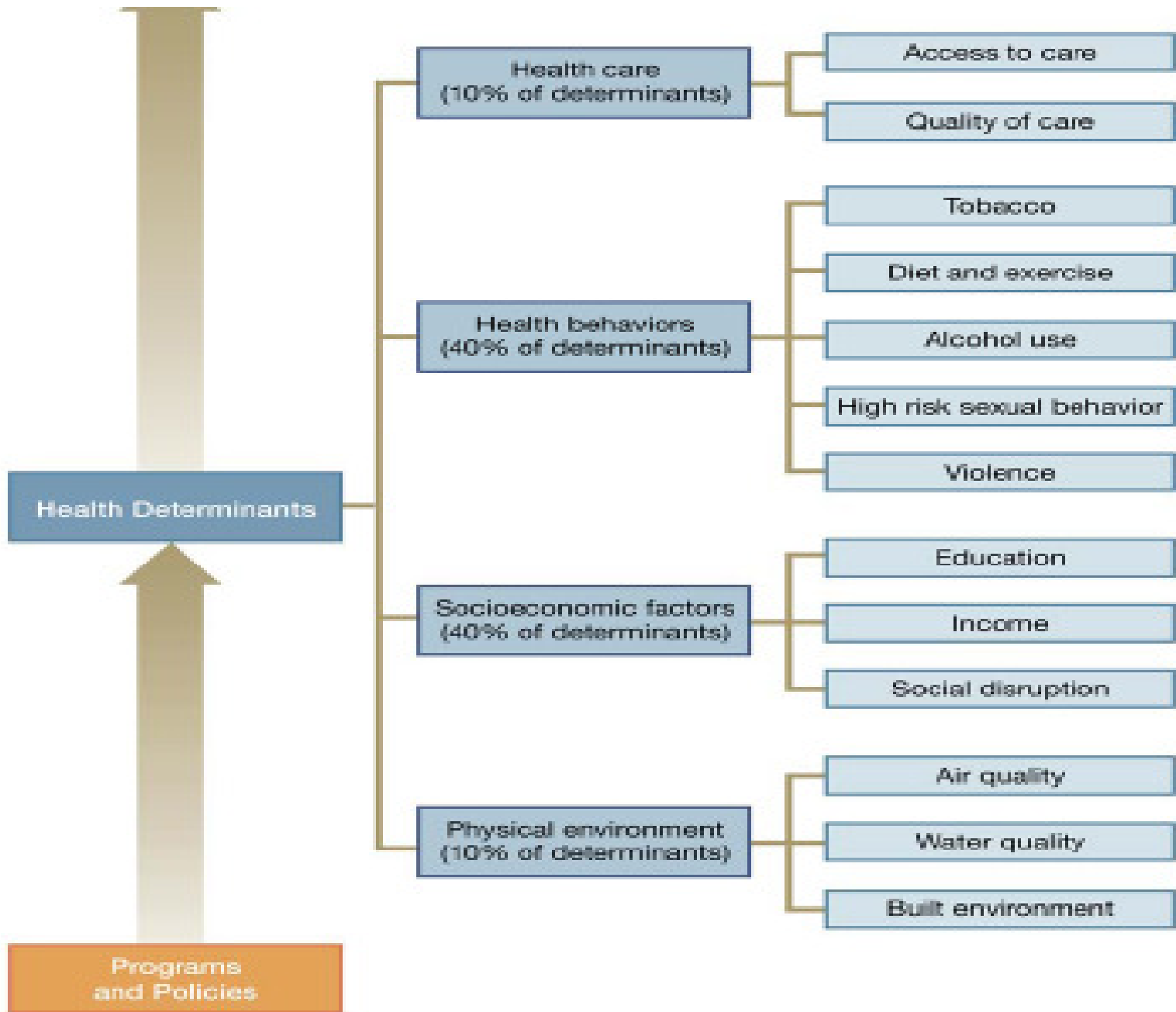


<http://pophealth.wisc.edu/uwphi/pha/wchr/2008.htm>

STRUCTURE OF THE RANKINGS





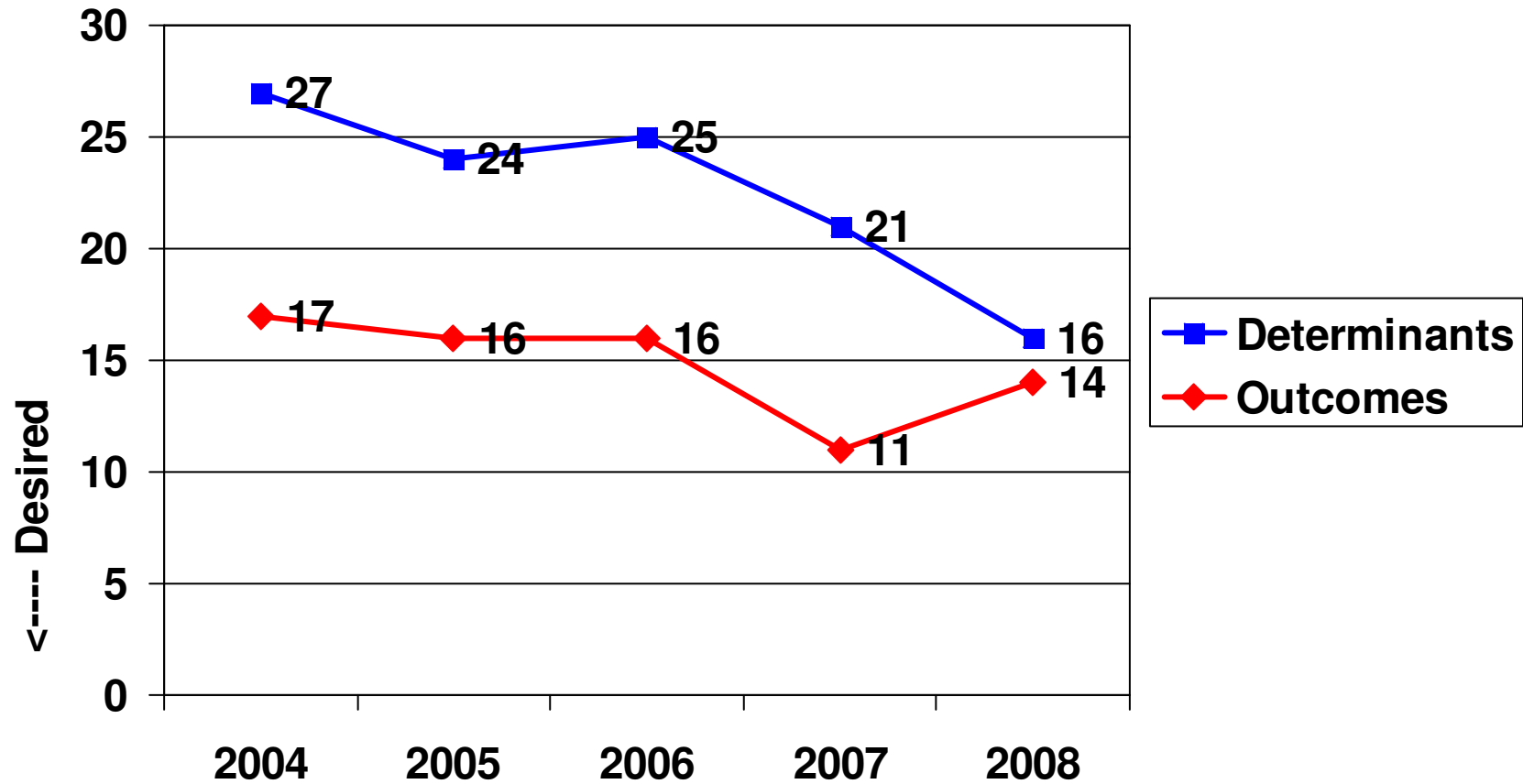


COMPONENT Category	Measure	Percent of Total Score	Data Source	Years of Data Used
HEALTH OUTCOMES				
Mortality	Years of Potential Life Lost	50	WISH	2004-2006
Morbidity	General Health Status	50	BRFSS, FHS	2001-2007, 2000-2006
HEALTH DETERMINANTS				
HEALTH CARE		10		
Access to Care	No Health Insurance	1.67	FHS	2000-2006
	Did Not Receive Needed Health Care	1.67	FHS	2000-2006
	No Recent Dentist Visit	1.67	FHS	2000-2006
Quality of Care	Poor Diabetic Care	1.67	Metastar	2005-2007
	No Biennial Mammography	1.67	Metastar	2005-2007
	Inpatient Quality of Care	1.67	US DHHS	2006-2007
HEALTH BEHAVIORS		40		
Tobacco	Cigarette Smoking	6	BRFSS	2001-2007
	Smoking During Pregnancy	6	WISH	2002-2005
Diet and Exercise	Physical Inactivity	4	BRFSS	2003, 2005, 2007
	Obesity	6	BRFSS	2001-2007
	Less Than 5 a Day	3	BRFSS	2001-2005, 2007
Alcohol Use	Binge Drinking	10	BRFSS	2001-2007
	Motor Vehicle Crash Occupancy	0.5	CODES	2003-2005
	MV Crash-Related ER Visits (On-Road)	0.5	WISH	2004-2006
	MV Crash-Related ER Visits (Off-Road)	0.5	WISH	2004-2006
High Risk Sexual Behavior	Teen Birth Rate	1	WISH	2003-2006
	Sexually Transmitted Disease	1	DHS	2003-2006
Violence	Violent Crime	1.5	OJA	2003-2006
SOCIOECONOMIC FACTORS		40		
Education	High School Noncompletion	6.67	DPI	2006-2007
	No High School Diploma	6.67	Census	2000
Income	Unemployment Rate	6.67	DWD	2007
	Children in Poverty	6.67	SAIPE	2005
Social Disruption	Divorce	6.67	Census	2000
	Single Parent Households	6.67	Census	2000
PHYSICAL ENVIRONMENT		10		
Air Quality	Air Quality Risk	3.33	EPA, DNR	1999, 2005-2007
Water Quality	Nitrate Levels in Water	3.33	DNR	2006-2007
Built Environment	Housing with Increased Lead Risk	0.56	Census	2000
	Lead Poisoned Children	0.56	DHS	2007
	Radon Risk	1.11	DHS	2006
	Method of Commuting: Driving Alone	1.11	Census	2000

How does La Crosse County
do?



La Crosse County Rankings



Health Outcomes

Measure	Percent of total score	La Crosse		Eau Claire		Best		State Average
		Score	Ranking	Score	Ranking	Score	County	
OVERALL			14		5		Ozaukee	
Years of Potential Life lost (age adjusted)	50%	5221	18	4917	11	4020	Ozaukee	5979
General Health Status (% fair/poor)	50%	11.6%	20	9.4%	4	6.6%	Iowa	13.2%

Health Determinants

Measure	Percent of total score	La Crosse Ranking	Eau Claire Ranking
OVERALL		16	17
Health Care	10%	6	1
Health Behaviors	40%	22	41
Socioeconomic Factors	40%	17	15
Physical Environment	10%	72	40

Health Determinants – Health Behaviors

Measure	Percent of total score	La Crosse		Eau Claire		Best		State Average
		Score	Ranking	Score	Ranking	Score	County	
Health Behaviors OVERALL	40%		22		41			
Cigarette smoking	6%	22.3%	43	17.9%	18	12.3%	Iron	20.9%
Smoking during pregnancy	6%	14.9%	23	17.1%	34	6.5%	Ozaukee	14.1%
Physical inactivity	4%	40.6%	13	45.3%	42	23.5%	Florence	44.5%
Obesity	6%	23.8%	28	20.6%	9	17.0%	Pepin	24.1%
Less than 5 a day	3%	76.0%	15	76.5%	22	64.0%	Buffalo	77.2%
Binge drinking	10%	22.6%	35	31.9%	72	10.3%	Washburn	23.2%

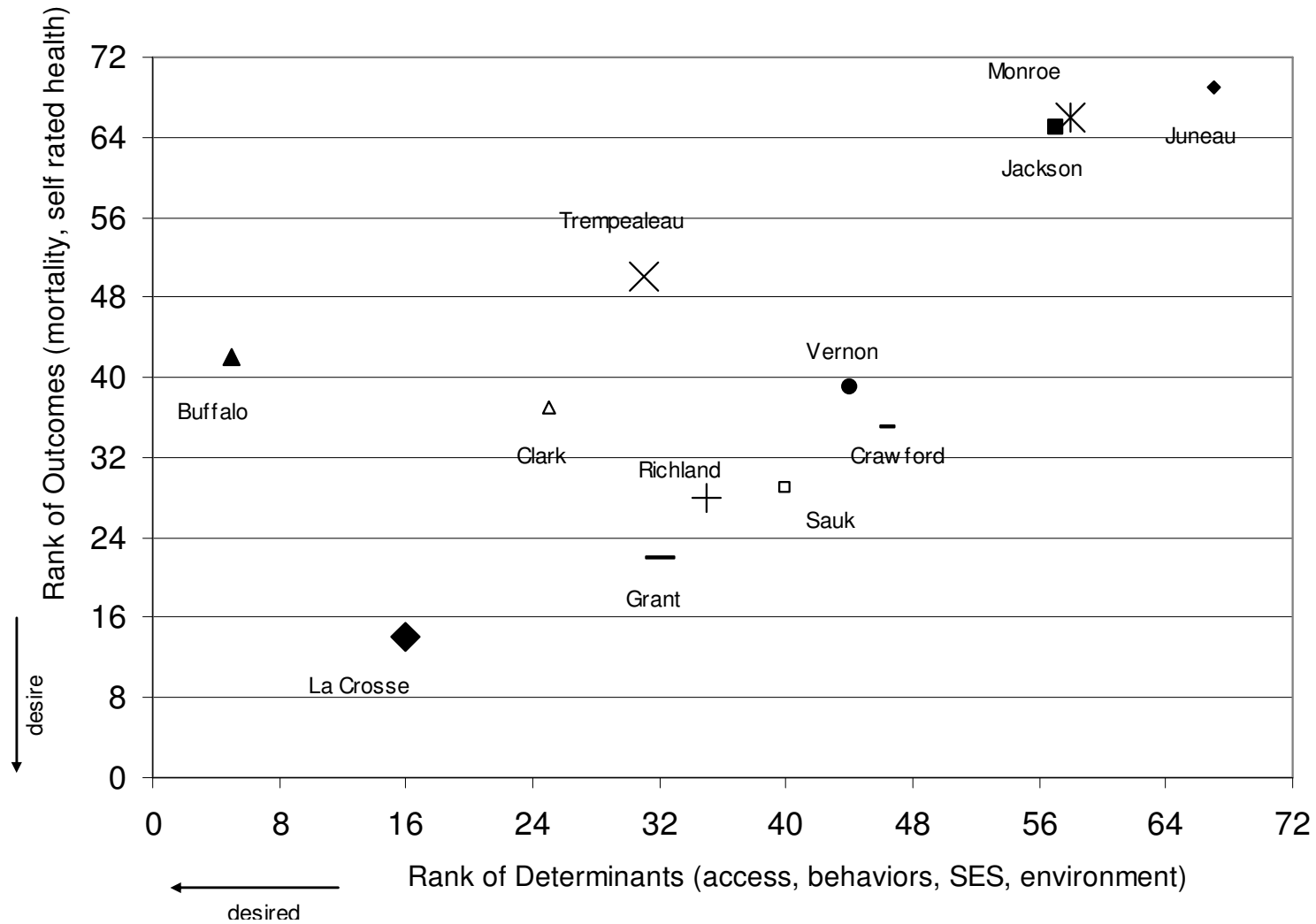
Health Determinants – Health Behaviors

Measure	Percent of total score	La Crosse		Eau Claire		Best		State Average
		Score	Ranking	Score	Ranking	Score	County	
Health Behaviors OVERALL	40%		22		41			
Motor vehicle crash	0.5%	43.7%	47	44.4%	48	20.6%	Menomonee	41.1%
MVC- ER visits (<u>on</u> road per 100,000)	0.5%	431.9	11	491.6	17	110.1	Florence	711.8
MVC – ER visits (<u>off</u> road per 100,000)	0.5%	66.0	7	79.0	13	38.2	Milwaukee	90.7
Teen birth rate	1%	20.3%	18	18.0%	13	8.8%	Ozaukee	30.9%
Sexually Transmitted disease (per 100,000)	1%	444.8	65	432.5	63	51.8	Florence	498.0
Violent crime (per 100,000)	1%	169	54	170.0	56	21.0	Crawford	240.0

What are La Crosse County residents dying from?

Cause of death (2007)	La Crosse		State
	Rate/100,000	YPLL	Rate/100,000
Cancer	203.75	1356	197.61
Heart Disease	168.87	698	201.71
Stroke	52.31	46	47.54
Chronic lower respiratory diseases	44.97	122	43.26
Alzheimer's disease	33.96	14	29.91
Unintentional injuries (Motor vehicle crash)	29.37 (4.59)	698 (154)	46.84 (14.31)
Pneumonia/influenza	27.53	128	18.46
Diabetes	20.19	133	20.52
Nephritis	18.36	10	18.14
Suicide	13.77	468	13.08
Septicemia	10.10	71	8.09

Summary Health Outcomes and Determinants Rankings 2008 out of 72 counties + (Milwaukee city)



La Crosse Medical Health
Science Consortium

Population Health Committee

HEALTH SCORECARD
www.communityscorecard.com

Chronic Disease

Injury and Violence

Mental Health

Infectious Disease

Other Factors

La Crosse Medical Health
Science Consortium

Population Health Committee

HEALTH SCORECARD

www.communityscorecard.com

Chronic Disease

Cholesterol

Obesity

Blood
Pressure

Physical
Activity

Smoking

Injury and Violence

Motor
Vehicle
Accidents

Risky
Alcohol
Use

Mental Health

Child
Abuse

Suicide

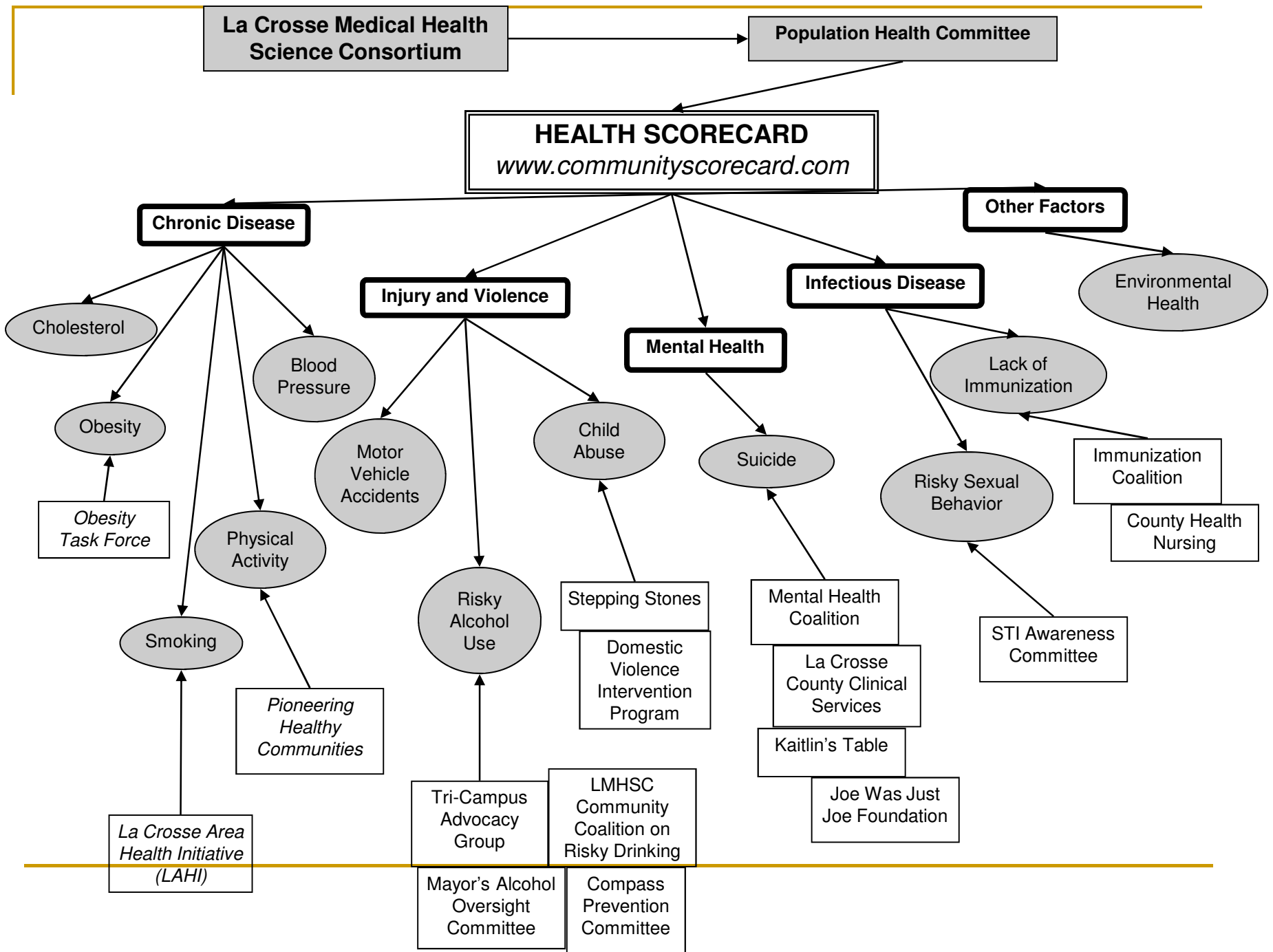
Infectious Disease

Lack of
Immunization

Risky Sexual
Behavior

Other Factors

Environmental
Health



La Crosse Medical Health Science Consortium

Population Health Committee

HEALTH SCORECARD
www.communityscorecard.com

Chronic Disease

Other Factors

Cholesterol

Obesity

Obesity Task Force

Blood Pressure

Physical Activity

Pioneering Healthy Communities

Smoking

La Crosse Area Health Initiative (LAHI)

Injury and Violence

Motor Vehicle Accidents

Risky Alcohol Use

Tri-Campus Advocacy Group

Mayor's Alcohol Oversight Committee

LMHSC Community Coalition on Risky Drinking

Compass Prevention Committee

Mental Health

Child Abuse

Stepping Stones

Domestic Violence Intervention Program

Suicide

Mental Health Coalition

La Crosse County Clinical Services

Kaitlin's Table

Joe Was Just Joe Foundation

Infectious Disease

Lack of Immunization

Immunization Coalition

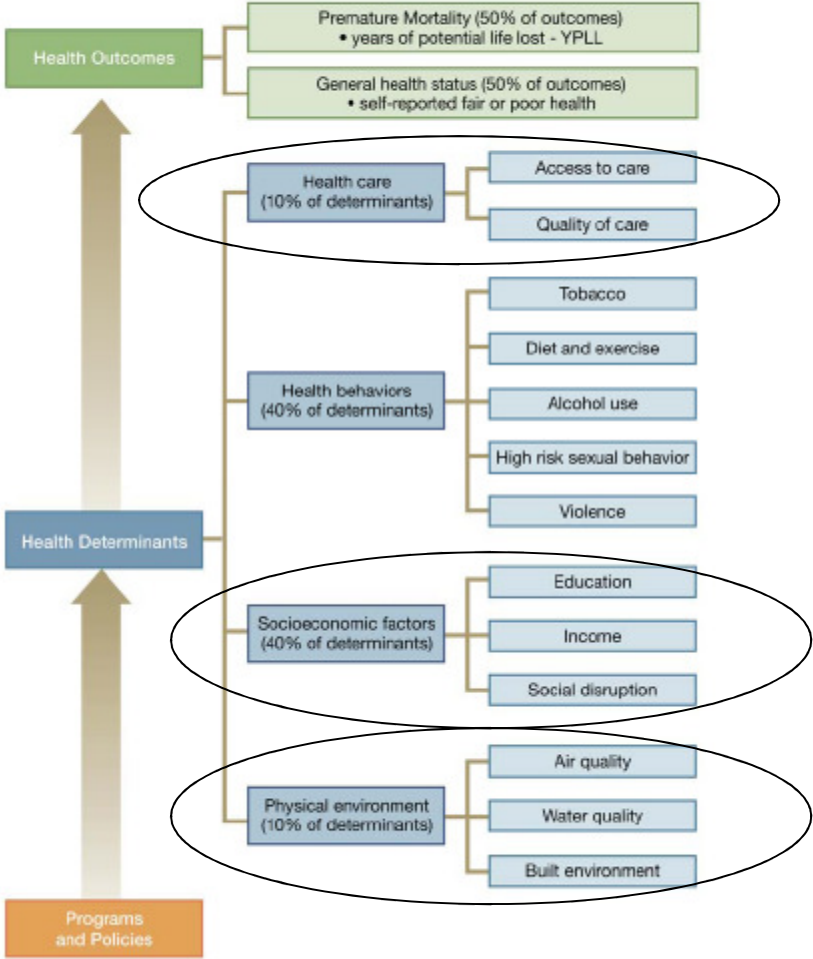
County Health Nursing

Risky Sexual Behavior

STI Awareness Committee

Environmental Health

STRUCTURE OF THE RANKINGS



Health determinants not being addressed today: Health Care

Dr. Rob Nesse – Franciscan Skemp
Healthcare



Health determinants not being
addressed today:
Socioeconomic Factors

Rosemary Boesen – United Way



Health determinants not being addressed today: Physical Environment

Doug Mormann – La Crosse County
Health Department



Examples of “Outside the Box Thinking” – Forging New Partnerships

Sandy Brekke – St. Clare Health
Mission



Examples of “Outside the Box Thinking” – Forging New Partnerships

Janet Stansfield Hess – Stansfield Vending

Programs, Projects and Policies

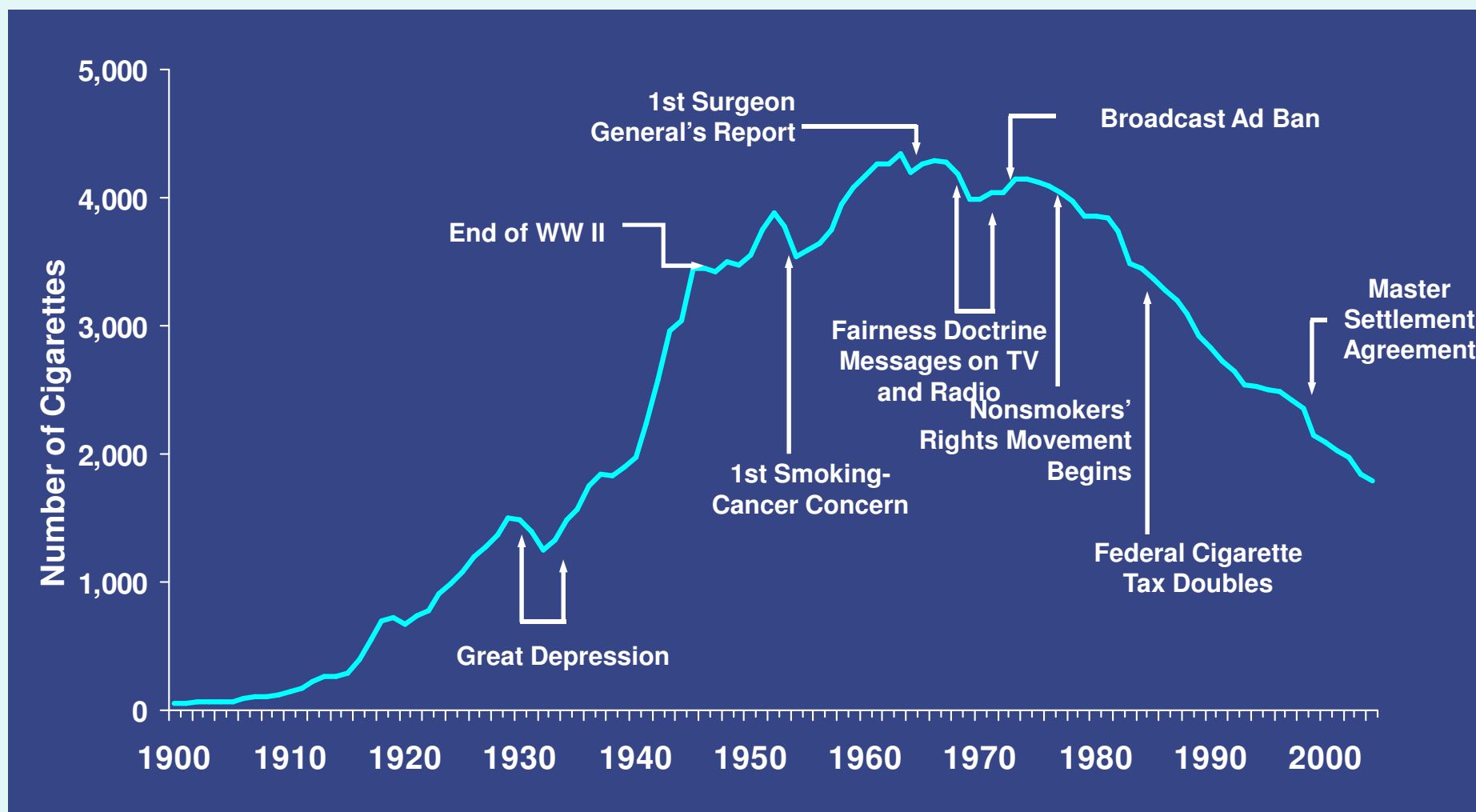
Brenda Rooney – Gundersen Lutheran



“Active Living Strategies”

- Programs – short-term awareness, knowledge-building or behavior change programs. Educate and build awareness. Encourage behavior change. (e.g., 10,000 steps, Minutes in Motion, etc)
- Physical Projects – physical permanent changes in the built environment (walking and bike paths, bike barns, farmers markets, quit lines, etc)
- Policies – rules that change what’s acceptable in a community (complete streets, smoking policies, taxes, incentives, etc.)

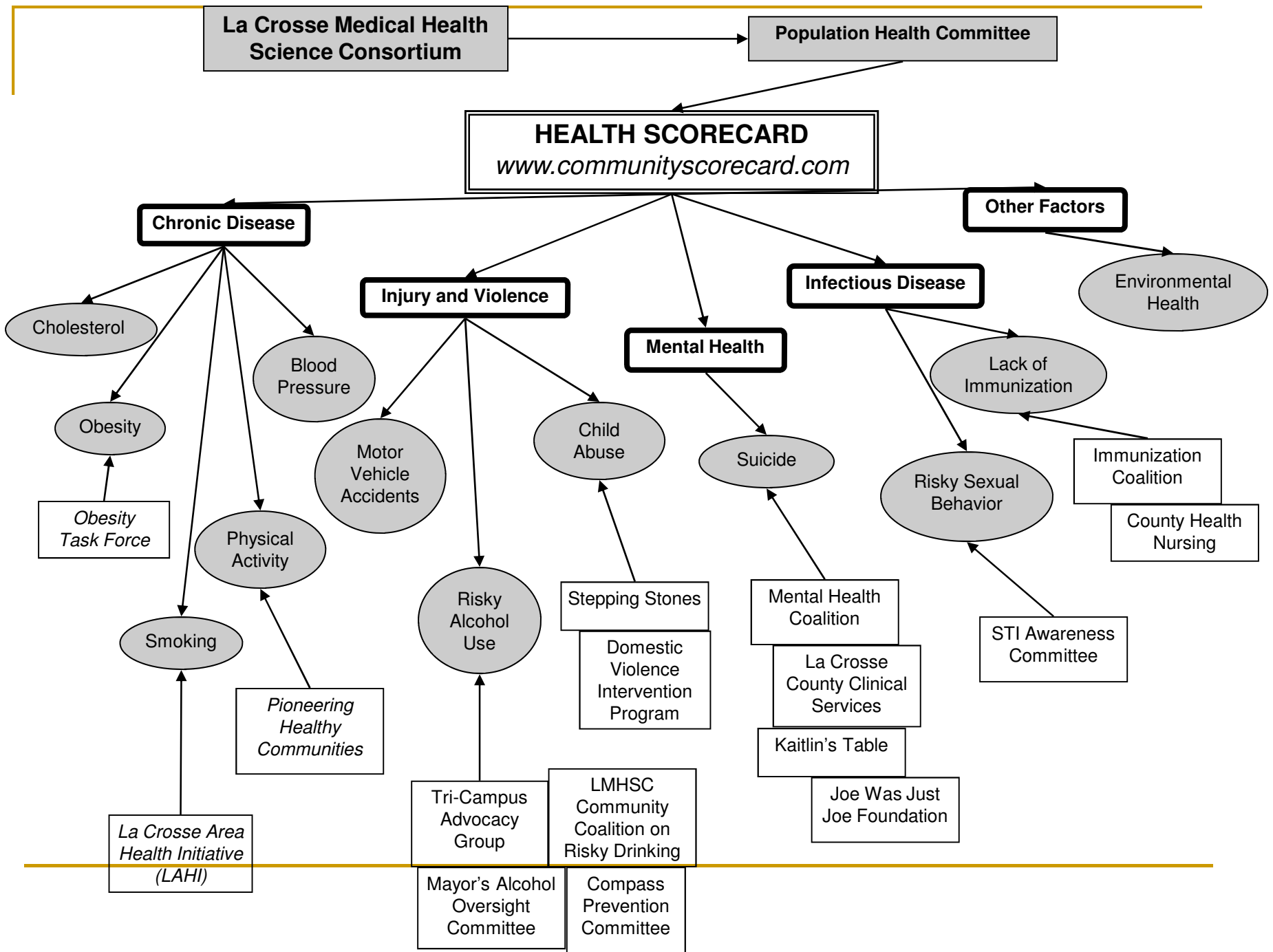
Example of policy's impact on behavior



Source: USDA Tobacco & Situation Outlook report, 2004 ;1986-2000 Surgeon General's Reports

Break Out Sessions – Forging New Partnerships to Find New Solutions

- What have we done in the past?
- What are your ideas on how to become the healthiest county?
- Brainstorm a list of Physical Projects and Policies within topic area



What Works? Policies and Programs to Improve Wisconsin's Health



Draft for discussion, January 2009



University of Wisconsin
SCHOOL OF MEDICINE
AND PUBLIC HEALTH

Funded by the Wisconsin Partnership Program,
University of Wisconsin School of Medicine and Public Health

University of Wisconsin Population Health Institute
Department of Population Health Sciences

Break Out Sessions – Forging New Partnerships to Find New Solutions

- Group 1: Chronic disease (obesity, tobacco, physical inactivity) - **Room 2064**
 - Group 2: Injury & violence (alcohol & child abuse) - **Room 2066**
 - Group 3: Mental health – **Room 2010**
 - Group 4: Infectious disease (sexually transmitted infections, communicable diseases) – **Room 2076**
-

Work Group Report Outs

- Group 1: Chronic disease
- Group 2: Injury & violence
- Group 3: Mental health
- Group 4: Infectious disease

Closing Remarks – Where do we go from here?

Betty Jorgenson

Dr. Jeffrey Thompson



Contact information

- La Crosse Medical Health Science Consortium
 - <http://home.lmhsconsortium.org>
 - Catherine Kolkmeier, Director, 785-5151
 - kolkmeie.cath@uwlax.edu
 - Joanne Sandvick, Project specialist, 785-5150
 - sandvick.joan@uwlax.edu
-