

---

# Welcome!

## Healthiest County 2015: La Crosse

---



---

# One Community at a Time (Video)

---

<http://generationpublichealth.org/video.php?version=standard>



---

# Let's start the summit!

---

Dr. Jeffrey Thompson –  
Gundersen Lutheran  
LMHSC Board President



---

# Thank You!

---



---

# Overview since May 2009

---

Betty Jorgenson –  
Franciscan Skemp  
LMHSC Population Health Committee Chair



---

April 2009 – 1<sup>st</sup> Summit

Summer/Fall – Drafted Plan

Fall – Met with Lead Organizations and updated draft

---

January 26, 2010 – Launched Plan

March 9, 2010 – 1<sup>st</sup> joint meeting with mental health groups and Population Health Committee



---

March 18, 2010 – La Crosse County adopted resolution to make LX county the healthiest by 2015

March 2010 – Family Policy Sub-committee was formed

---

April/May 2010 – Pioneering Healthier Communities Well Workplace



---

# County Health Rankings Model and How La Crosse Stacks Up

---

Brenda Rooney

Gundersen Lutheran

LMHSC Population Health Committee



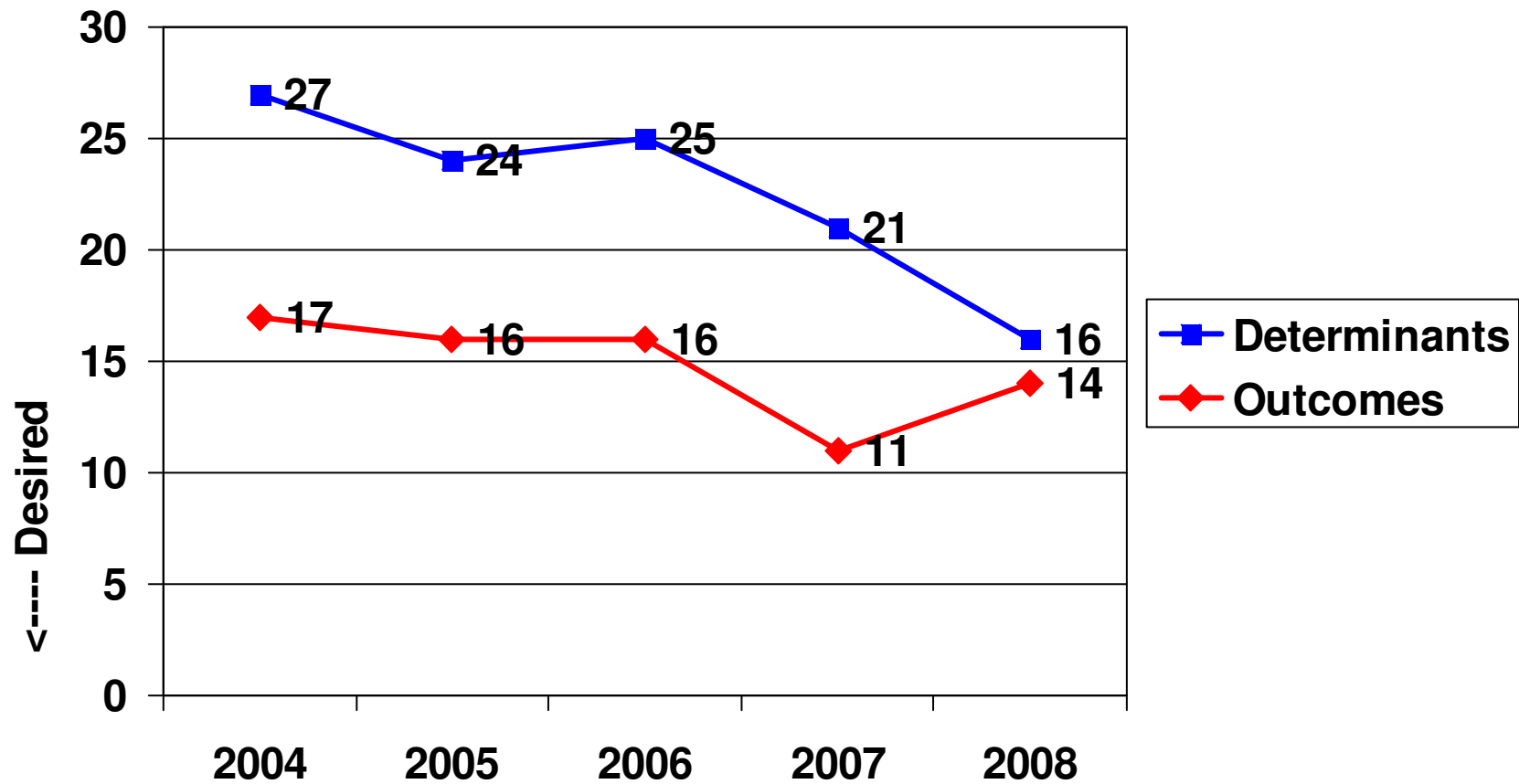


# County Health Rankings Model

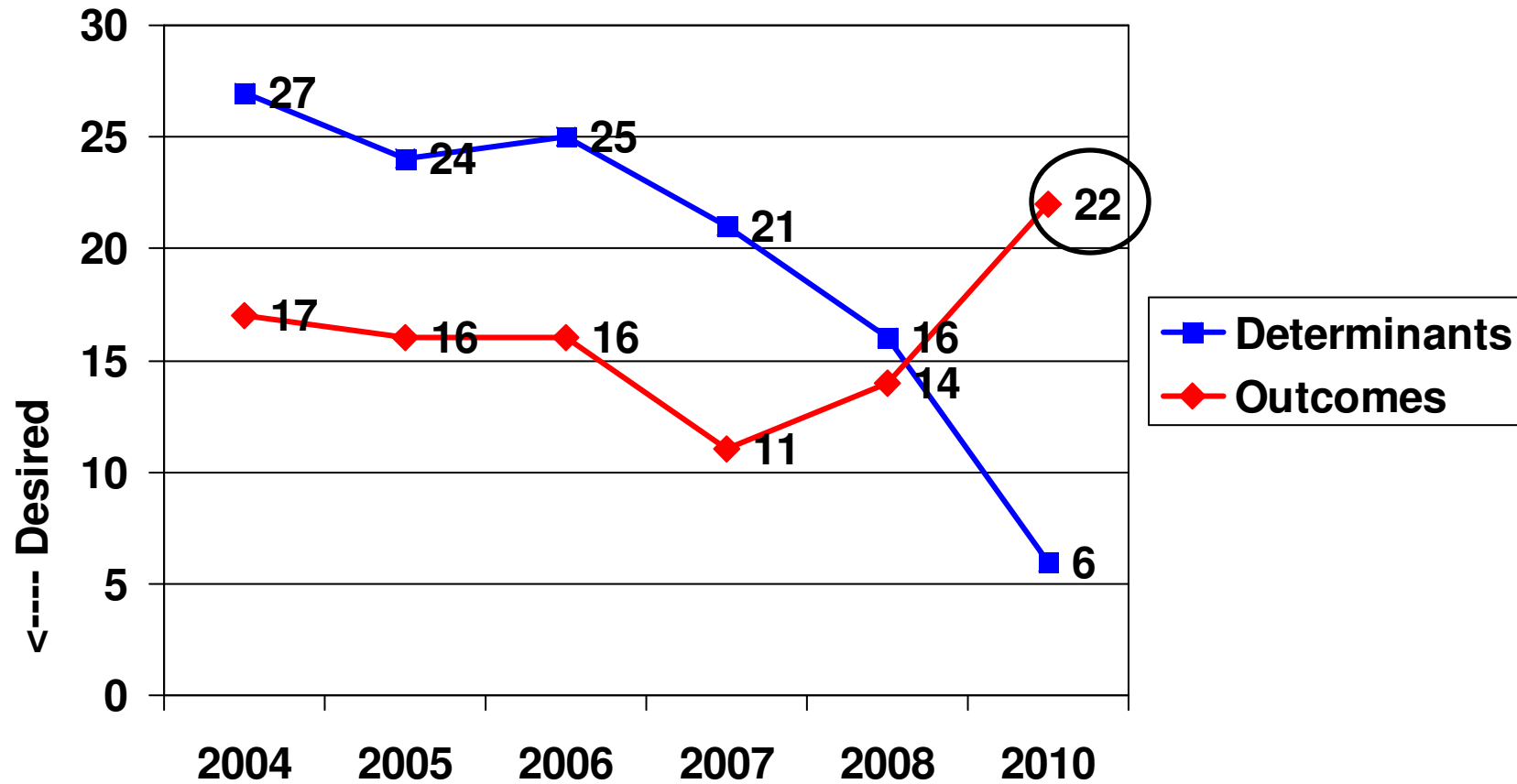


<http://uwphi.pophealth.wisc.edu/pha/wchr/2010.htm>

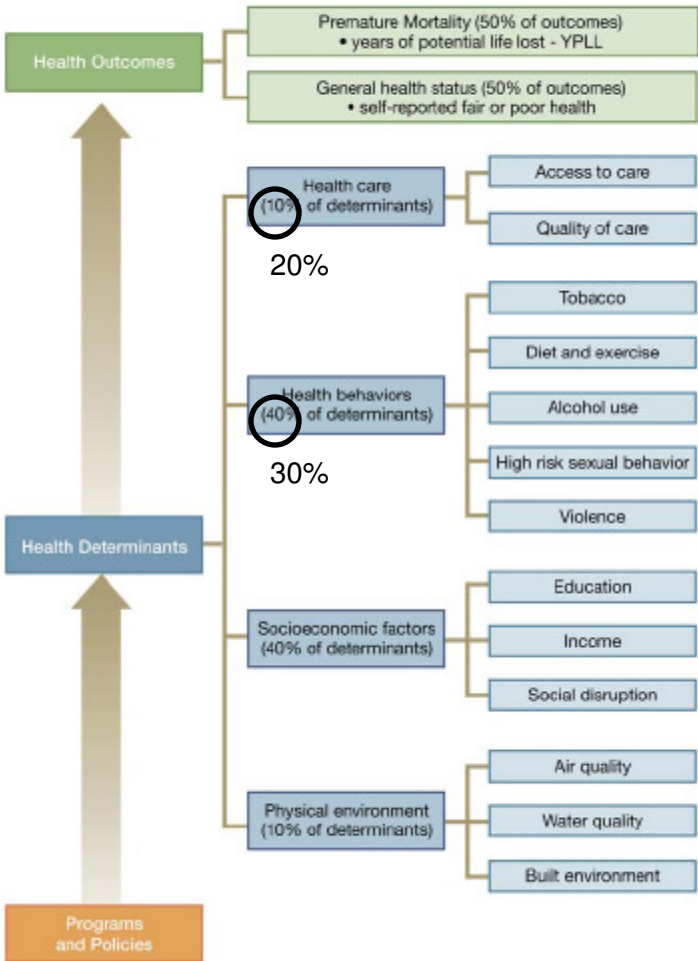
# La Crosse County Rankings



# La Crosse County Rankings



**STRUCTURE OF THE RANKINGS**



# Ranking by category

Measure	2008	2010
Health Outcomes		
Mortality	18	14
Morbidity	20	39
Health Factors (Determinants)		
Clinical Care	6	1
Health Behaviors	22	21
Social & Economic factors	17	13
Physical Environment	72	3

COMPONENT Category	Measure	Percent of Total Score	Data Source	Years of Data Used
<b>HEALTH OUTCOMES</b>				
Mortality	Years of Potential Life Lost	50	WISH	2004-2006
Morbidity	General Health Status	50	BRFSS, FHS	2001-2007, 2000-2006
<b>HEALTH DETERMINANTS</b>				
<b>HEALTH CARE</b>		<b>10</b>		
Access to Care	No Health Insurance	1.67	FHS	2000-2006
	Did Not Receive Needed Health Care	1.67	FHS	2000-2006
	No Recent Dentist Visit	1.67	FHS	2000-2006
Quality of Care	Poor Diabetic Care	1.67	Metastar	2005-2007
	No Biennial Mammography	1.67	Metastar	2005-2007
	Inpatient Quality of Care	1.67	US DHHS	2006-2007
<b>HEALTH BEHAVIORS</b>		<b>40</b>		
Tobacco	Cigarette Smoking	6	BRFSS	2001-2007
	Smoking During Pregnancy	6	WISH	2002-2005
Diet and Exercise	Physical Inactivity	4	BRFSS	2003, 2005, 2007
	Obesity	6	BRFSS	2001-2007
	Less Than 5 a Day	3	BRFSS	2001-2005, 2007
Alcohol Use	Binge Drinking	10	BRFSS	2001-2007
	Motor Vehicle Crash Occupancy	0.5	CODES	2003-2005
	MV Crash-Related ER Visits (On-Road)	0.5	WISH	2004-2006
	MV Crash-Related ER Visits (Off-Road)	0.5	WISH	2004-2006
High Risk Sexual Behavior	Teen Birth Rate	1	WISH	2003-2006
	Sexually Transmitted Disease	1	DHS	2003-2006
Violence	Violent Crime	1.5	OJA	2003-2006
<b>SOCIOECONOMIC FACTORS</b>		<b>40</b>		
Education	High School Noncompletion	6.67	DPI	2006-2007
	No High School Diploma	6.67	Census	2000
Income	Unemployment Rate	6.67	DWD	2007
	Children in Poverty	6.67	SAIPE	2005
Social Disruption	Divorce	6.67	Census	2000
	Single Parent Households	6.67	Census	2000
<b>PHYSICAL ENVIRONMENT</b>		<b>10</b>		
Air Quality	Air Quality Risk	3.33	EPA, DNR	1999, 2005-2007
Water Quality	Nitrate Levels in Water	3.33	DNR	2006-2007
Built Environment	Housing with Increased Lead Risk	0.56	Census	2000
	Lead Poisoned Children	0.56	DHS	2007
	Radon Risk	1.11	DHS	2006
	Method of Commuting: Driving Alone	1.11	Census	2000

## 2010 County Health Rankings: Measures, Data Sources, and Years of Data

	Measure	Data Source	Years of Data
<b>HEALTH OUTCOMES</b>			
<b>Mortality</b>	Premature death	National Center for Health Statistics	2004-2006
<b>Morbidity</b>	Poor or fair health	Behavioral Risk Factor Surveillance System	2002-2008
	Poor physical health days	Behavioral Risk Factor Surveillance System	2002-2008
	Poor mental health days	Behavioral Risk Factor Surveillance System	2002-2008
	Low birthweight	National Center for Health Statistics	2000-2006
<b>HEALTH FACTORS</b>			
<b>HEALTH BEHAVIORS</b>			
<b>Tobacco</b>	Adult smoking	Behavioral Risk Factor Surveillance System	2002-2008
<b>Diet and Exercise</b>	Adult obesity	National Center for Chronic Disease Prevention and Health Promotion	2006-2008
<b>Alcohol Use</b>	Binge drinking	Behavioral Risk Factor Surveillance System	2002-2008
	Motor vehicle crash death rate	National Center for Health Statistics	2000-2006
<b>High Risk Sexual Behavior</b>	Chlamydia rate	National Center for Health Statistics	2006
	Teen birth rate	National Center for Health Statistics	2000-2006
<b>CLINICAL CARE</b>			
<b>Access to Care</b>	Uninsured adults	Small Area Health Insurance Estimates, U.S. Census	2005
	Primary care provider rate	Health Resources & Services Administration	2006
<b>Quality of Care</b>	Preventable hospital stays	Medicare/Dartmouth Institute	2005-2006
	Diabetic screening	Medicare/Dartmouth Institute	2003-2006
	Hospice use	Medicare/Dartmouth Institute	2001-2006
<b>SOCIOECONOMIC FACTORS</b>			
<b>Education</b>	High school graduation	National Center for Education Statistics <sup>1</sup>	2005-2006
	College degrees	U.S. Census/American Community Survey	2000/2005-2007
<b>Employment</b>	Unemployment	Bureau of Labor Statistics	2008
<b>Income</b>	Children in poverty	Small Area Income and Poverty Estimates, U.S. Census	2007
	Income inequality	U.S. Census/American Community Survey <sup>2</sup>	2000/2005-2007
<b>Family and Social Support</b>	Inadequate social support	Behavioral Risk Factor Surveillance System	2005-2008
	Single-parent households	U.S. Census/American Community Survey	2000/2005-2007
<b>Community Safety</b>	Violent crime <sup>3</sup>	Uniform Crime Reporting, Federal Bureau of Investigation	2005-2007
<b>PHYSICAL ENVIRONMENT</b>			
<b>Air Quality<sup>4</sup></b>	Air pollution-particulate matter days	U.S. Environmental Protection Agency / Centers for Disease Control and Prevention	2005
	Air pollution-ozone days	U.S. Environmental Protection Agency / Centers for Disease Control and Prevention	2005
<b>Built Environment</b>	Access to healthy foods	Census Zip Code Business Patterns	2006
	Liquor store density	Census County Business Patterns	2006

---

[www.communityscorecard.com](http://www.communityscorecard.com)





La Crosse Medical Health  
Science Consortium

Population Health Committee

**HEALTH SCORECARD**  
*www.communityscorecard.com*

Chronic Disease

Injury and Violence

Mental Health

Infectious Disease

Other Factors

La Crosse Medical Health  
Science Consortium

Population Health Committee

**HEALTH SCORECARD**

[www.communityscorecard.com](http://www.communityscorecard.com)

**Chronic Disease**

Cholesterol

Obesity

Blood  
Pressure

Physical  
Activity

Smoking

**Injury and Violence**

Motor  
Vehicle  
Accidents

Risky  
Alcohol  
Use

Child  
Abuse

**Mental Health**

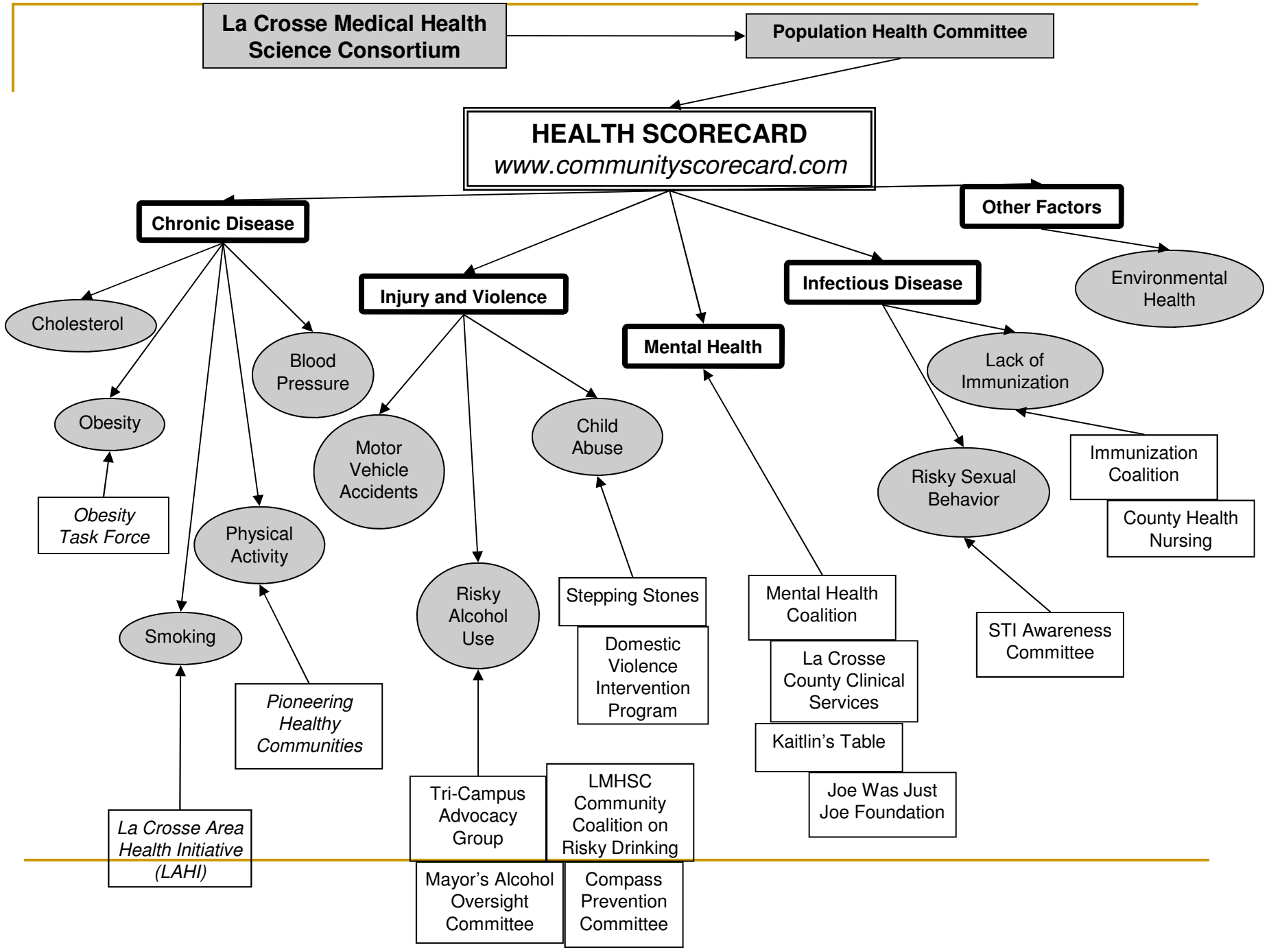
**Infectious Disease**

Lack of  
Immunization

Risky Sexual  
Behavior

**Other Factors**

Environmental  
Health



---

# American Reinvestment and Recovery Act (ARRA) Funding

---

Linda Lee

La Crosse County Nutrition Manager



---

# Health Policy and Its Impact on Population Health

---

Dr. Seth Foldy

State Health Officer and Administrator  
of the Division of Public Health for the  
State of Wisconsin



---

# A Local Example!

## LAHI

(La Crosse Area Health Initiative)

---

Paula Silha

La Crosse County Health Educator

LMHSC Population Health Committee



---

-Break

-Reconvene for break out  
sessions at 11:20 am

---

---

Chronic Disease – Rm 2016

Mental Health – Rm 2012

Injury Prevention – Rm 2065

Infectious Disease – Rm 2076

---



---

# Contact information

- La Crosse Medical Health Science Consortium
    - <http://home.lmhsconsortium.org>
    - Catherine Kolkmeier, Director, 785-5151
      - [kolkmeie.cath@uwlax.edu](mailto:kolkmeie.cath@uwlax.edu)
    - Joanne Sandvick, Project Specialist, 785-5150
      - [sandvick.joan@uwlax.edu](mailto:sandvick.joan@uwlax.edu)
-